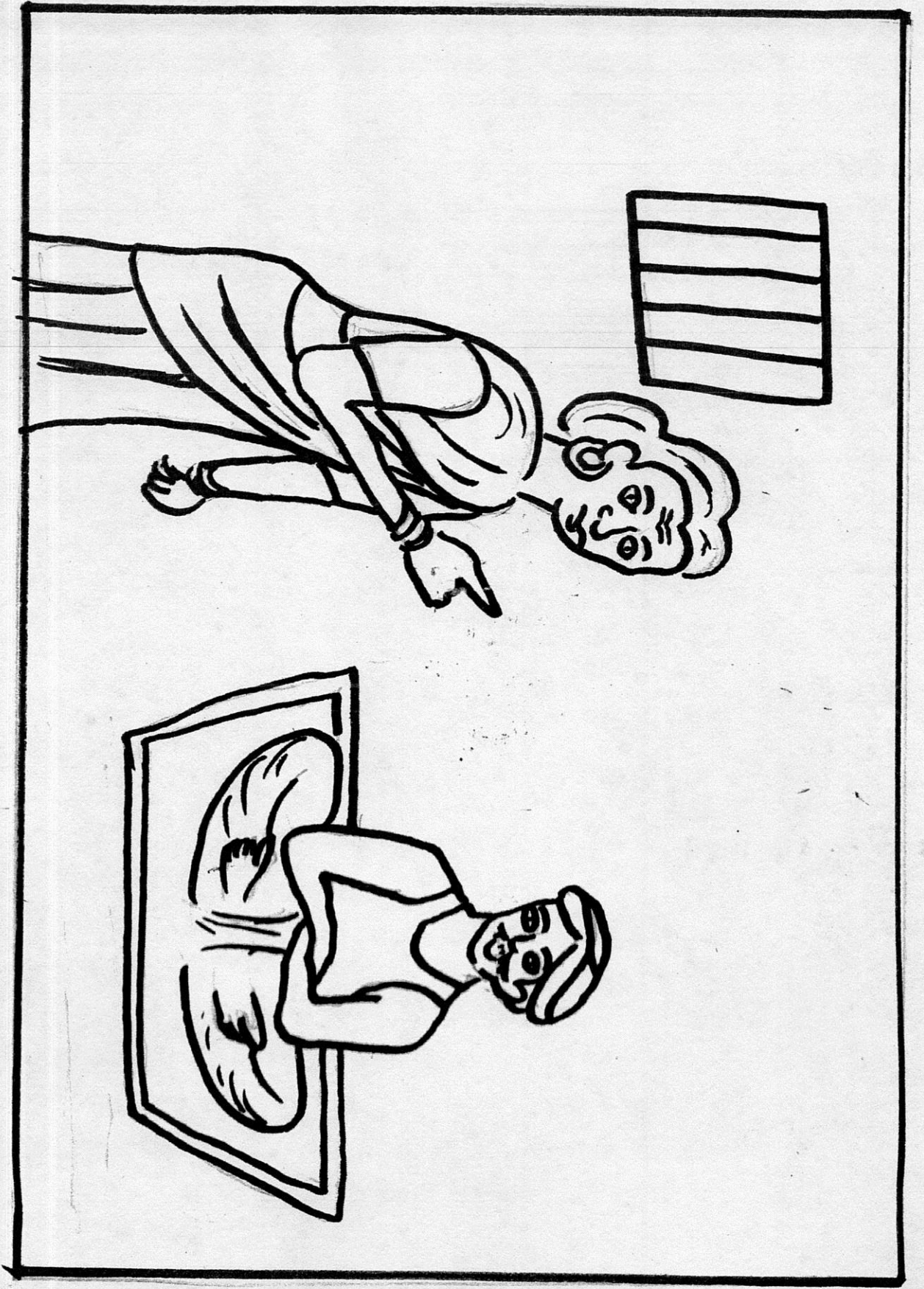
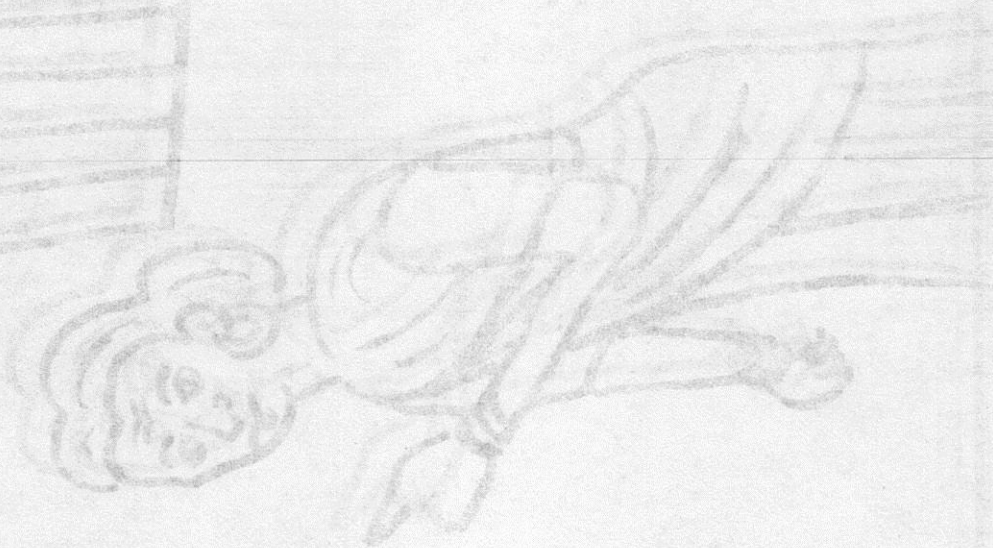
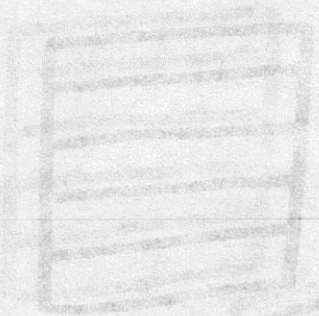


Handwritten text in a rectangular frame, oriented vertically. The text is in Chinese characters, appearing to be a list or a set of instructions. The characters are somewhat faded and difficult to read precisely, but they seem to be arranged in two columns. The top characters are likely the title or main subject of the document.





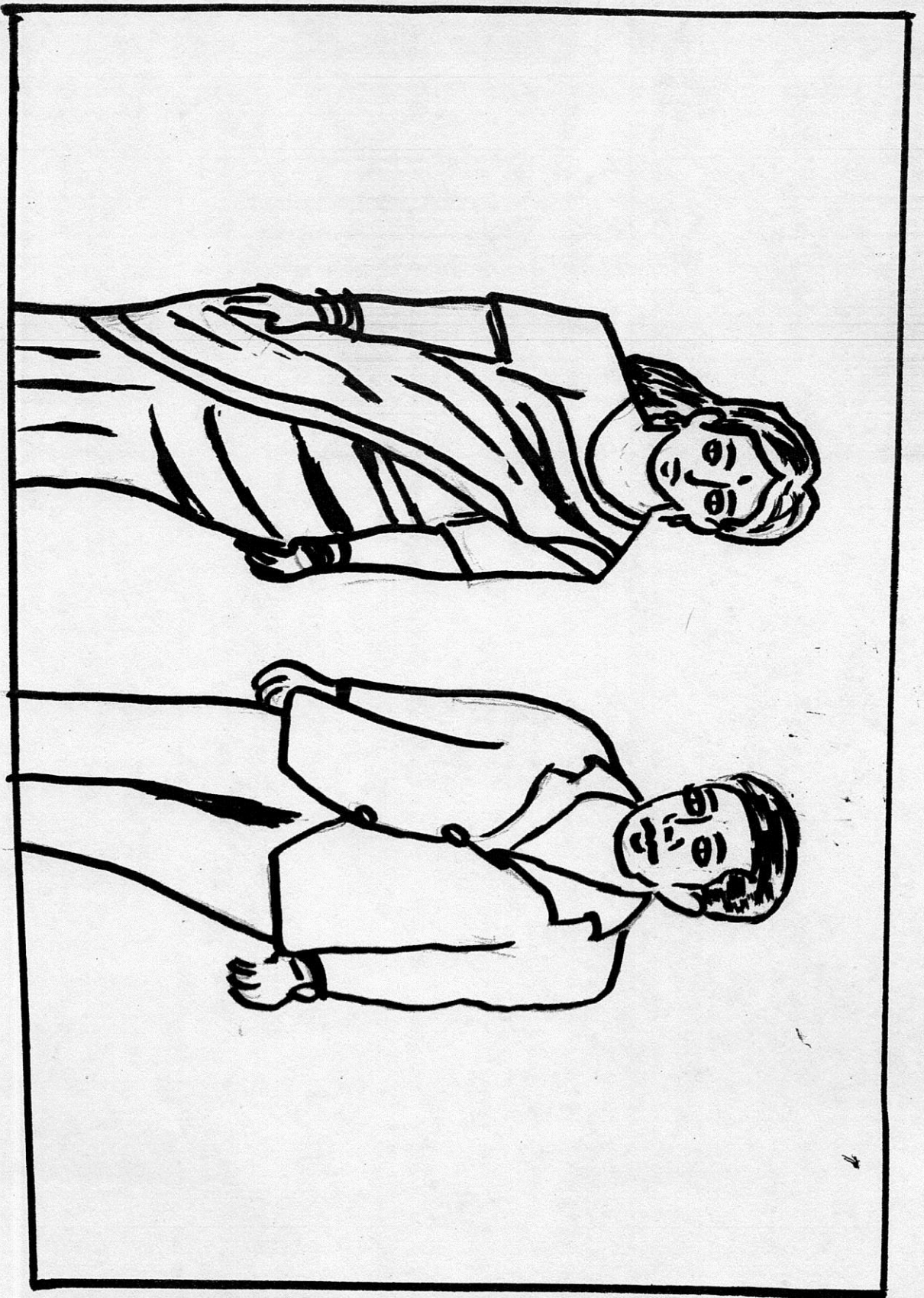


गोरेक गावें कुंदा -

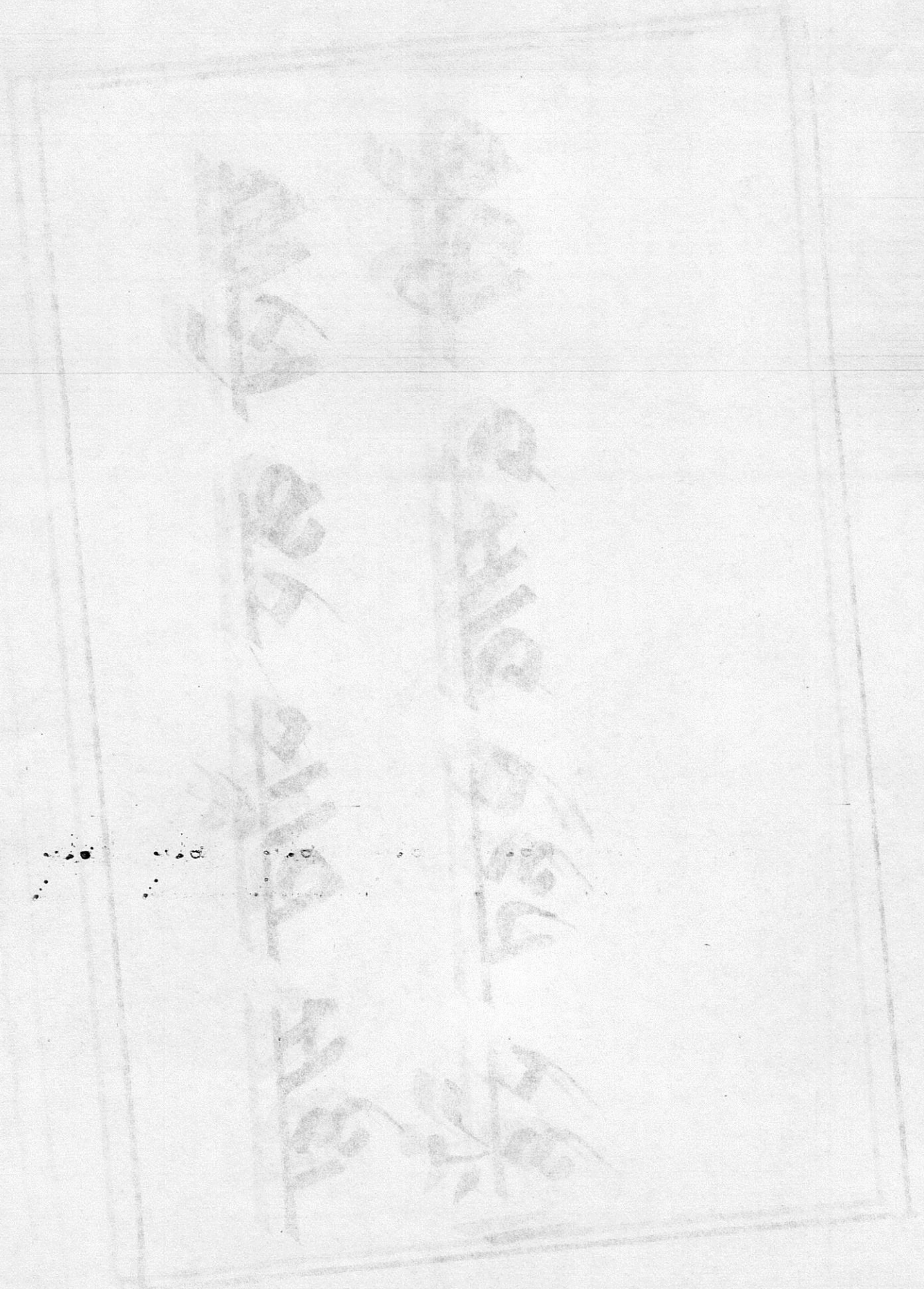
कुंदा गावें ।

ॐ नमो भगवते वासुदेवाय ॥

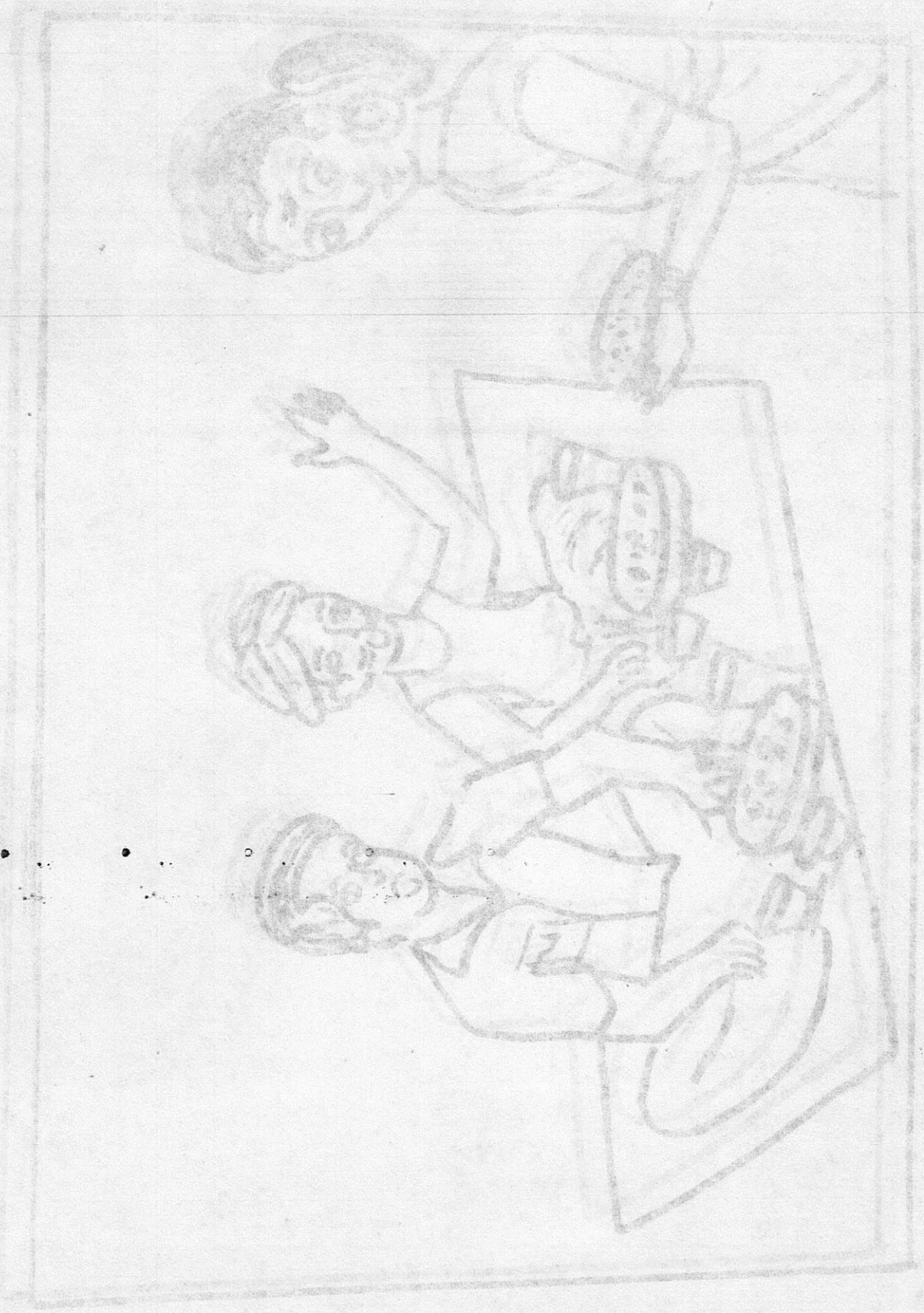
ॐ नमो भगवते वासुदेवाय ॥



ॐ नमो भगवते वासुदेवाय ।
ॐ नमो भगवते वासुदेवाय ।







अहम दिन में दसांदा अस्पर धर आलिक
स्परण तुन्दिया कलमेक। सु तुंग दसांदा
आहे ~~हे~~ आलेक सुपवा मार। तुंग कलमेक -
ठीके कलमे तुन्दिया सांस नीमेक। रवायेक
वेरा तुन्दिया दावे साव। मान मेमेक।
काकलेक कि धरे सुवा की रते। तुंग साव।
दावे मान देरष के कलमेक। कलमे तुन्दिया
सुवा। तुन्दिया कलमेक - का कलमे तुंग,
दसादनी धर क सुवा दावे अलाधर। दसाद
स्परण हीसमेक।

